

The A.I. Shift

Kevin Dherman | Chief Innovation Officer

LOOKING BACK....

BOTS

- ❖ Conversation Agent
 - ❖ AKA Web robot
 - ❖ Natural Language Understanding
- ❖ Social Media – plugin
- ❖ SYSPRO BOT Framework




Machine Learning 2017 H2

- ❖ AKA – Artificial Intelligence
- ❖ Surfacing Insights
 - ❖ Structure/Unstructured Data
 - ❖ External Sources


Predictions	Anomaly Detection
Sentiment Detection	Recommendations
Confidence	Intelligent Action

HOW AND WHY A.I.?




Accessibility =>
natural language

HOW AND WHY A.I.?




Accessibility =>
natural language




Information
management


HOW AND WHY A.I.?



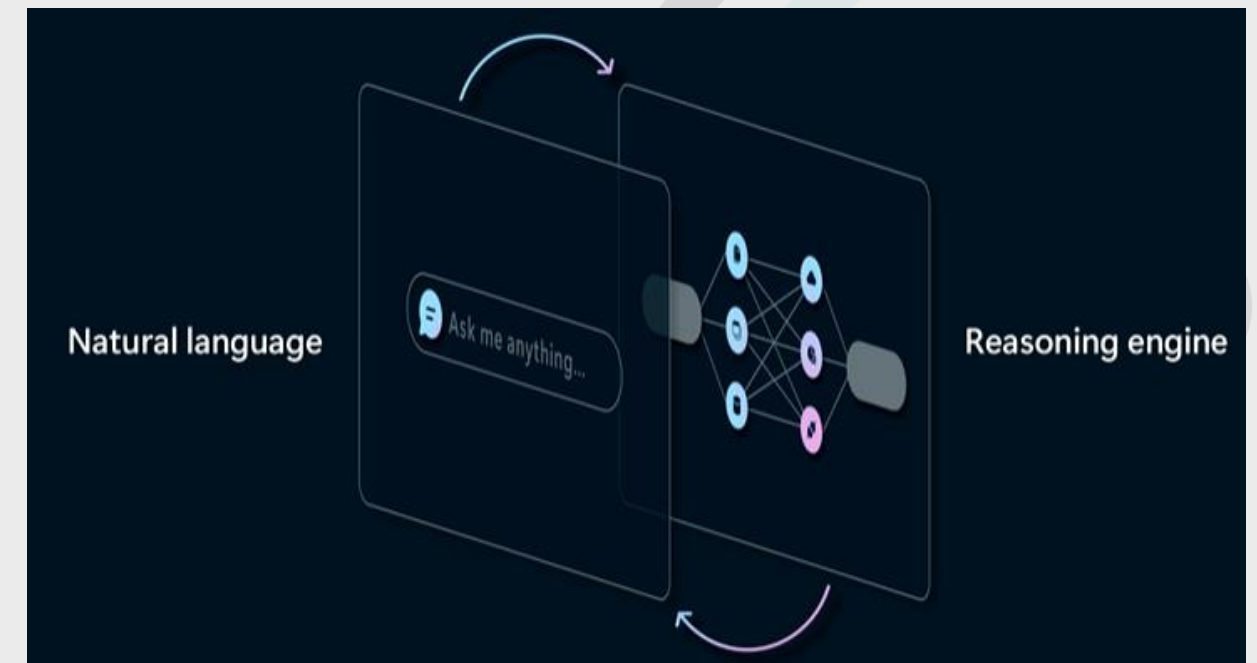
Accessibility =>
natural language




Information
management




Reasoning
engine




HOW AND WHY A.I.?




Accessibility =>
natural language



Information
management



Reasoning
engine



Work trend
index

HOW AND WHY A.I.?



Accessibility =>
natural language



Information
management



Reasoning
engine



Work trend
index

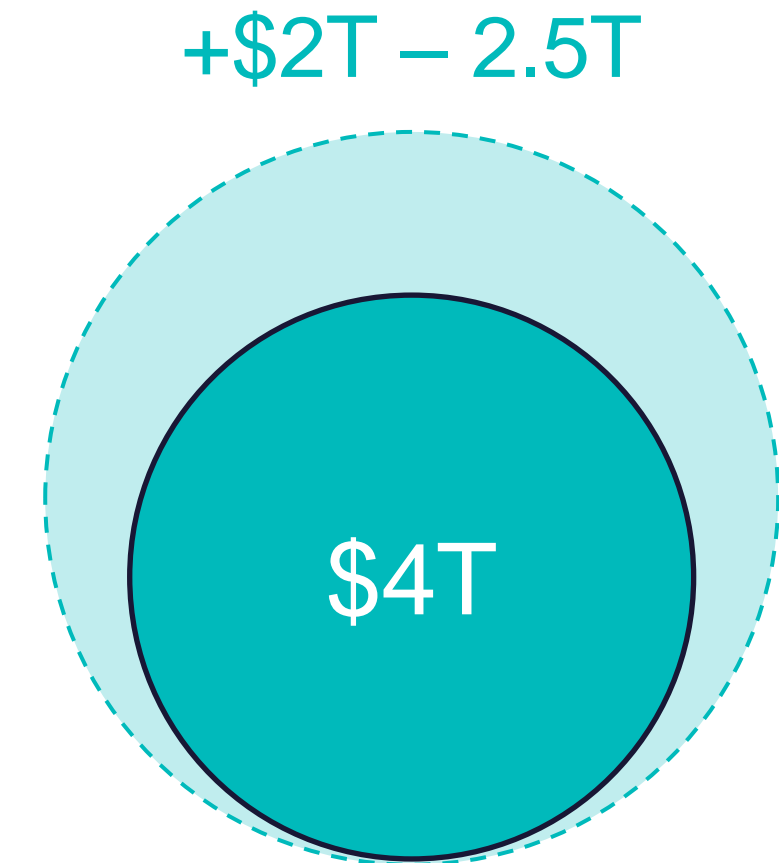
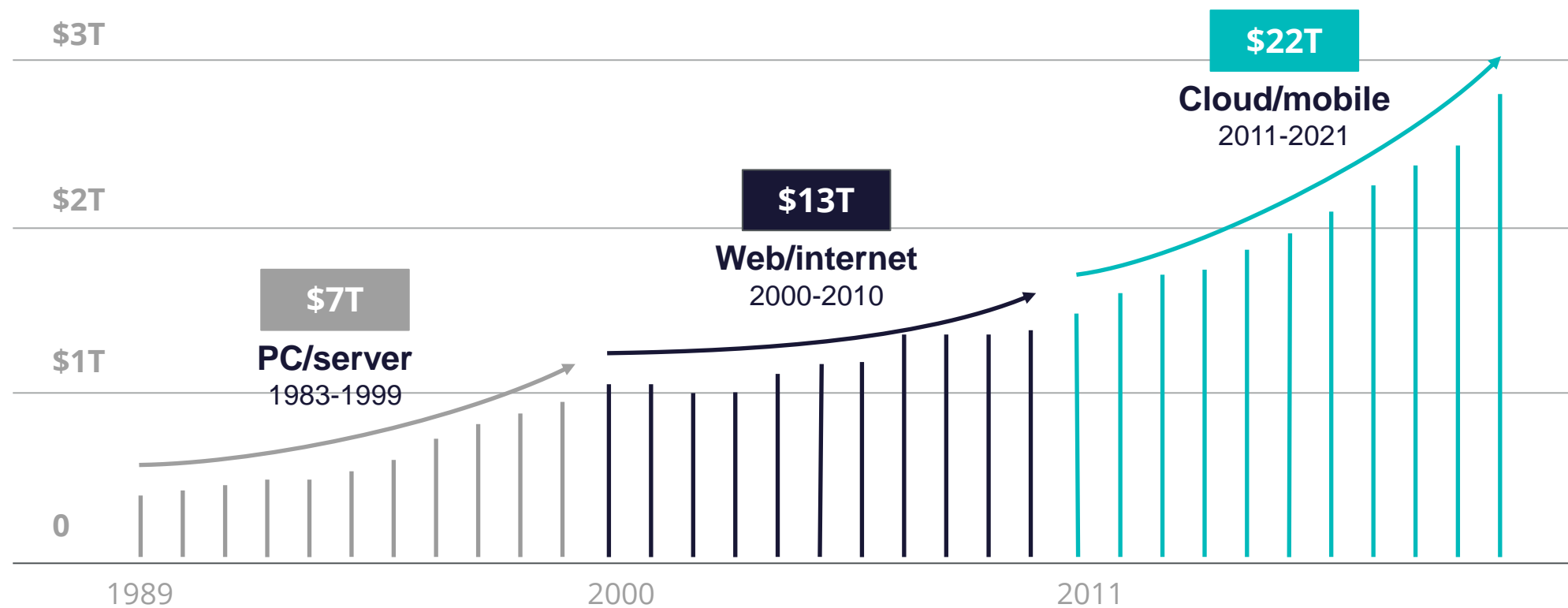


Opportunity
Shift

POTENTIAL OPPORTUNITY



Opportunity over the decades Worldwide IT spending



Potential Spend



SYSPRO A.I.



**Traditional A.I.
(Machine Learning)**



Cognitive A.I.



Generative A.I.

Traditional AI



Predictions



Recommendations



Anomaly detection



Pattern recognition



Sentiment and confidence

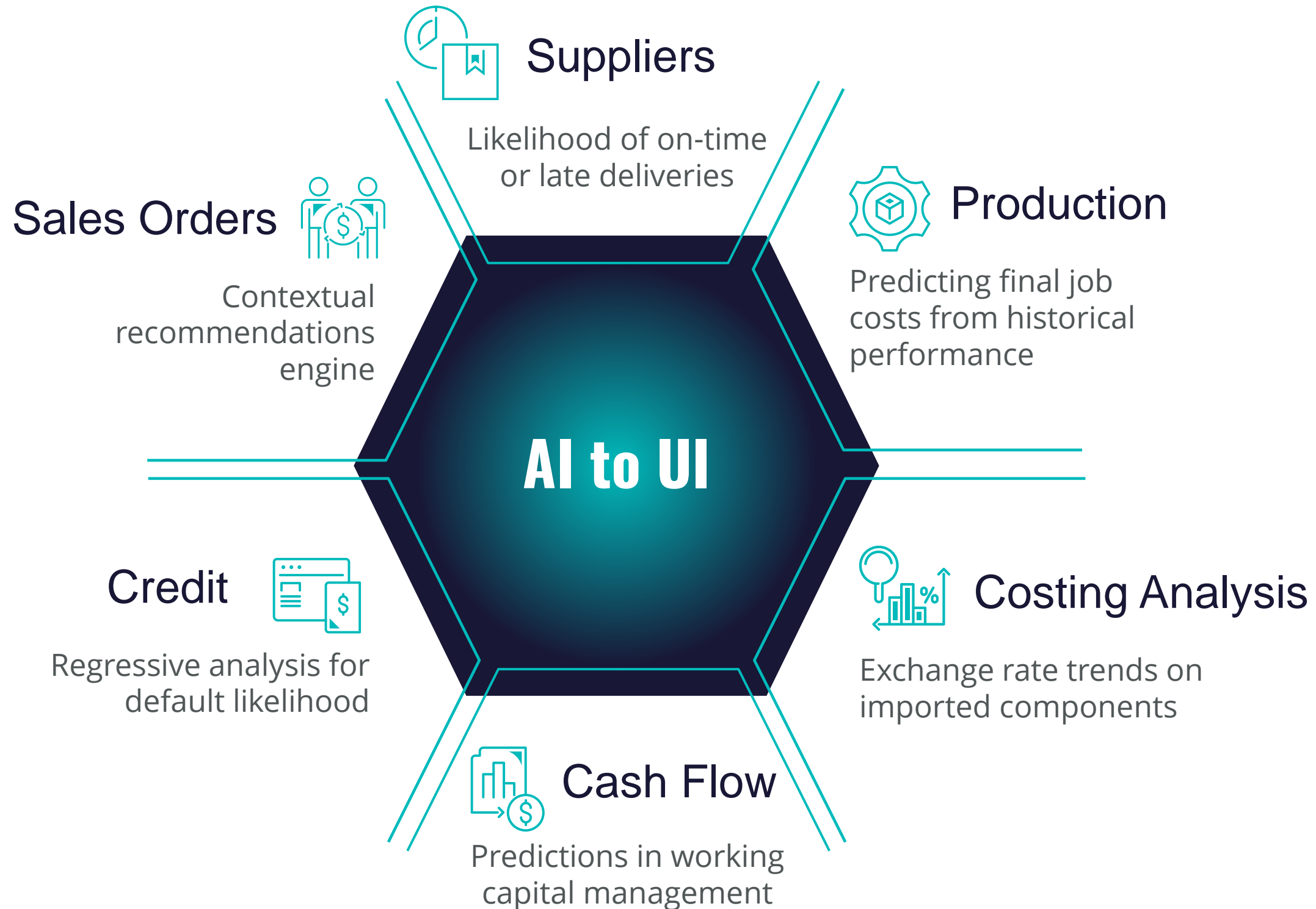


**GL anomalies
Upsell & Cross-sell**

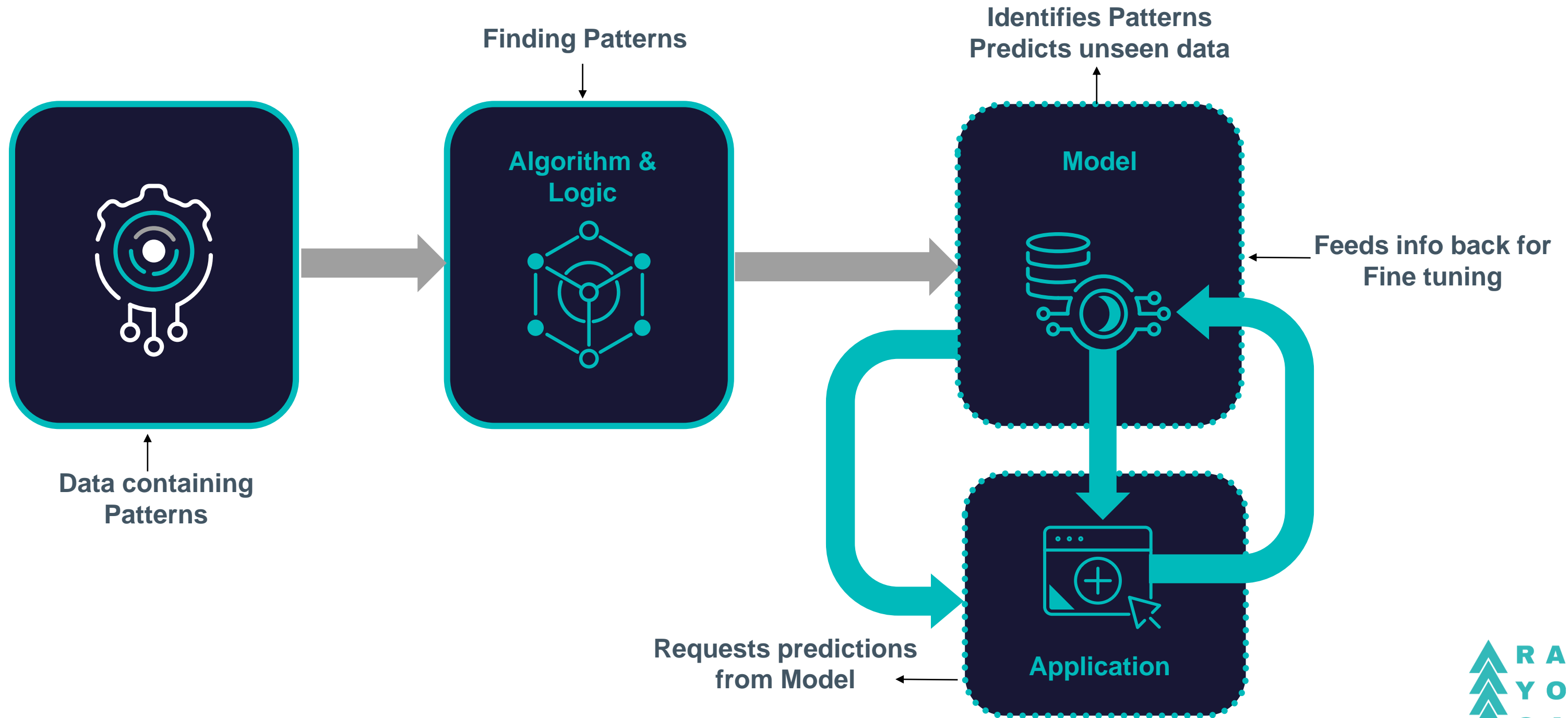


**Inventory
Asset & Finance**

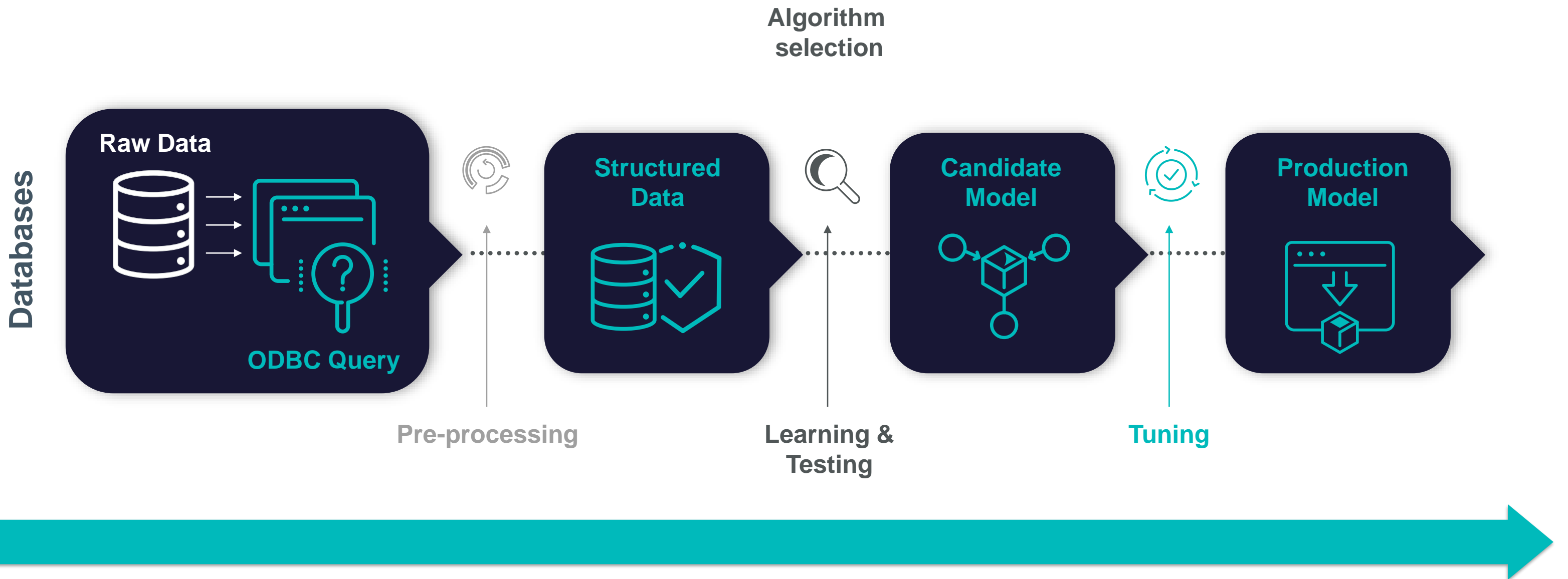
Example Models



Machine Learning: High Level View



SYSPRO Machine Learning Process



Pre-processing

Learning & Testing

Tuning

Machine Learning Studio



SYSPRO Home > Machine Learning Studio Kevin

Projects

- ▶ SYSPRO
- ▶ SYSTEM
- ▶ COMPANY
 - ▶ EDU1 - Demo for Debby
 - ▶ SalesOrderLine
 - ▶ StockCodeProfitability
 - ▶ CustomerInvoicePayDays
 - ▶ PurchaseOrderLine
 - ▶ PODaysLate
 - Version - 2
 - ▶ AInvoicePayment
 - ▶ JobStatus
 - Version - 5
 - Version - 6

SQL Query

Execute Query

```
1 datediff(day, MLatestDueDate, MLastReceiptDat) as DaysLate from PorMasterDetail as PMD inner join PorMasterHdr as PMH on(PMD.PurchaseOrder=PMH.PurchaseOrder) where (PMD.MLatestDueDate is not null)and(PMD.MLastReceiptDat is not null)
```

Model information

Neg_mean_squared_error <small>Scoring method</small>	64.3397 UNITS <small>Total set score</small>	+/-137.0085 UNITS <small>Possible error</small>
241 <small>Test observations</small>	960 <small>Training observations</small>	Perform prediction

Train project	Copy to new version	Advanced options
Activate project	Deactivate project	Download project

Feature importance

Model feature impact

Feature	% importance
MLatestDueDate	28.00
MOrigDueDate	26.00
MOrderQty	14.00
MReceivedQty	13.00
Supplier	5.00
MStockCode	4.50
MProductClass	3.50
MWarehouse	3.00
MPrice	3.00

[View data](#)

Project Information

Model	Regression
Name	PODaysLate
Description	Number of days late a PO will be
Data source	SYSPRO_8_EDU1_2023
Status	Active
Output column	DaysLate



Cognitive AI



Text recognition



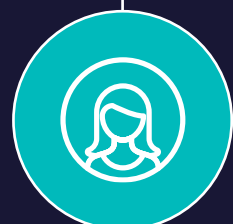
Image and video recognition



Speech-to-text-to-speech



Object tracking



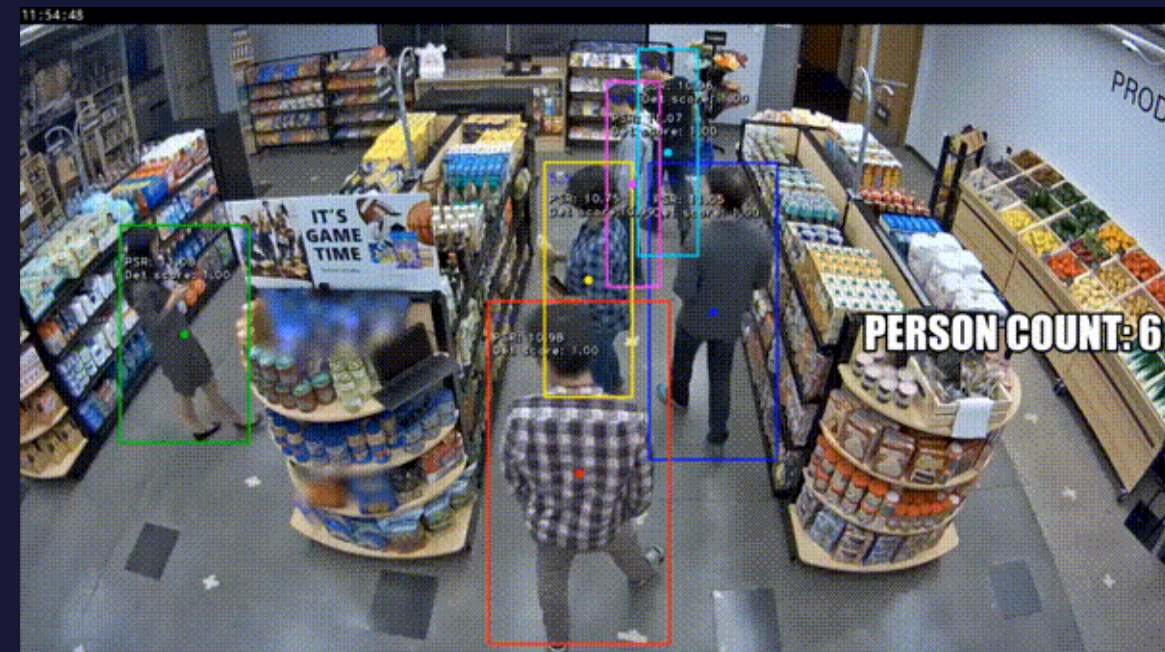
Facial recognition



Document recognition



Media recognition



Raise Your Game

Thank you!